

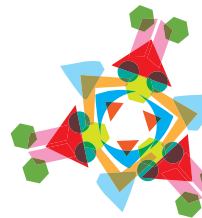
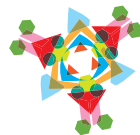
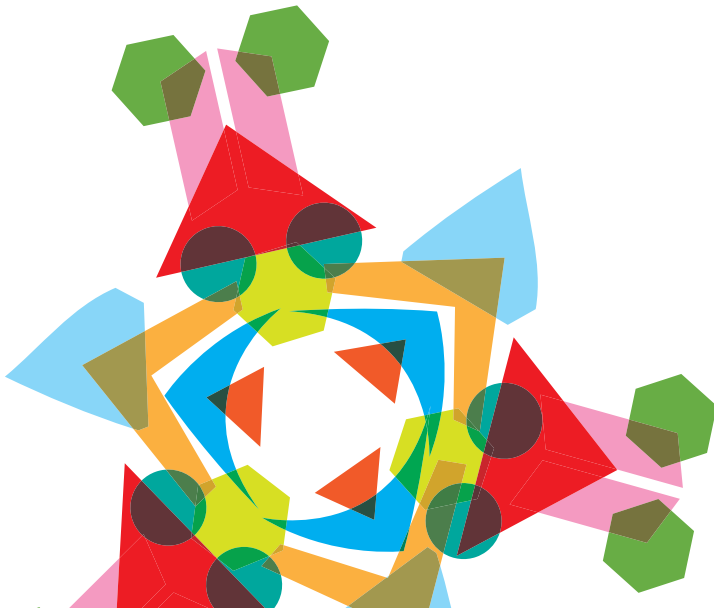


Welcome to
More Choice



Mouse Panels

Choose from our extensive portfolio of
high-quality fluorescent-conjugated reagents
to build your multicolor flow cytometry panels.





Welcome to a More Colorful WorldSM

Visit **bdbiosciences.com/choice** to see our extensive portfolio of both new and existing reagents. Then choose reagents to build panels that suit your unique research needs.

These panels were designed based on the general principles of multicolor panel design and have not been tested experimentally at BD Biosciences. Users are encouraged to design and optimize their panels based on their specific instrument and experimental design.

These panels are provided as examples only.

Panels may be compatible with other instruments depending on specific configuration.





B/Plasma Cells

7 Color

| Marker | Clone | Fluorochrome | Cat. No. |
|---------------------------------------|-----------|-------------------------------|-------------------------|
| CD5 (Ly-1) | 53-7.3 | PerCP | 553025 |
| CD19 | 1D3 | APC-Cy TM 7 | 557655 |
| CD24 (Heat Stable Antigen) | M1/69 | PE-Cy7 | 560536 |
| CD45 (Leucocyte Common Antigen, Ly-5) | 30-F11 | Alexa Fluor® 700 | 560510 |
| CD138 (Syndecan-1) | 281-2 | APC | 558626 |
| IgD | 11-26c.2a | FITC | 553439 |
| IgM | R6-60.2 | BD Horizon TM V450 | 560575 BD |

Instrument Compatibility*

| Flow cytometry systems | | | Cell sorters | |
|-------------------------------|------------------------------|-------------------------|---------------------------|-------------------------|
| BD FACSCanto TM II | BD LSRFortessa TM | BD TM LSR II | BD FACSAria TM | BD Influx TM |
| ● | ● | ● | ● | ● |

*Instrument must be equipped with a violet laser.

560643

560643 **BD**

Colors denote newly released products. Products unique to BD Biosciences





Mouse Panels

Dendritic Cells

6 Color

| Marker | Clone | Fluorochrome | Cat. No. |
|-----------------------------------|-------------|------------------|---------------|
| CD3e (CD3 ϵ chain) | 145-2C11 | FITC | 553061 |
| CD8a (Ly-2) | 53-6.7 | PerCP-Cy™5.5 | 551162 |
| CD11b (Integrin α_m chain) | M1/70 | APC-Cy7 | 557657 |
| CD11c (Integrin α_x chain) | HL3 | Alexa Fluor® 700 | 560583 |
| CD83 | Michel-19 | APC | 558206 |
| I-A/I-E | M5/114.15.2 | PE | 557000 |

Instrument Compatibility

| Flow cytometry systems | | | Cell sorters | |
|------------------------|-----------------|------------|--------------|------------|
| BD FACSCanto™ II | BD LSRFortessa™ | BD™ LSR II | BD FACSAria™ | BD Influx™ |
| ● | ● | ● | ● | ● |



560643

Colors denote newly released products.

Visit bdbiosciences.com/choice for the most up-to-date product listings.

Dendritic Cells

8 Color

| Marker | Clone | Fluorochrome | Cat. No. |
|--------------------------------------|-------------|------------------|---------------|
| CD3e (CD3 ϵ chain) | 145-2C11 | APC-Cy7 | 557596 |
| CD8a (Ly-2) | 53-6.7 | PerCP-Cy5.5 | 551162 |
| CD11b (Integrin α_m chain) | M1/70 | PE-Cy7 | 552850 |
| CD11c (Integrin α_x chain) | HL3 | Alexa Fluor® 700 | 560583 |
| CD80 (B7-1) | 16-10A1 | BD Horizon V450 | 560523 |
| CD83 | Michel-19 | APC | 558206 |
| CD123 (IL-3 Receptor α chain) | 5B11 | Biotin* | 555070 |
| I-A/I-E | M5/114.15.2 | PE | 557000 |

Instrument Compatibility†

| Flow cytometry systems | | | Cell sorters | |
|------------------------|-----------------|------------|--------------|------------|
| BD FACSCanto™ II | BD LSRFortessa™ | BD™ LSR II | BD FACSAria™ | BD Influx™ |
| ● | ● | ● | ● | ● |

*For second-step detection we recommend Streptavidin-Fluorescein Isothiocyanate (SAv-FITC) (Cat. No. 554060).

†Instrument must be equipped with a violet laser.

560643

Colors denote newly released products. Products unique to BD Biosciences

560643

Mouse Panels

Myeloid Precursor

6 Color

| Marker | Clone | Fluorochrome | Cat. No. |
|-----------------------------------|---------|------------------|------------------|
| CD3e (CD3 ϵ chain) | 500A2 | Alexa Fluor® 700 | 557984 |
| CD11b (Integrin α_m chain) | M1/70 | BD Horizon V450 | 560455 560456 |
| CD11c (Integrin α_x chain) | HL3 | PerCP-Cy5.5 | 560584 |
| CD19* | 1D3 | Alexa Fluor® 700 | 557958 |
| CD45R/B220* | RA3-6B2 | Alexa Fluor® 700 | 557957 |
| Ly-6G and Ly6C (Gr-1) | RB6-8C5 | PE-Cy7 | 552985 |
| TER-119/Erythroid cells (Ly-76) | Ter-119 | FITC | 557915 |

Instrument Compatibility¹

| Flow cytometry systems | | | Cell sorters | |
|------------------------|-----------------|------------|--------------|------------|
| BD FACSCanto™ II | BD LSRFortessa™ | BD™ LSR II | BD FACSAria™ | BD Influx™ |
| ● | ● | ● | ● | ● |

*Need to be gated together for gating B cells.
¹Instrument must be equipped with a violet laser.

560643

Colors denote newly released products.

Visit bdbiosciences.com/choice for the most up-to-date product listings.

NK Cells

5 Color

| Marker | Clone | Fluorochrome | Cat. No. |
|--|---------|------------------|----------|
| CD3e (CD3 ϵ chain) | 500A2 | Alexa Fluor® 700 | 557984 |
| CD27 (low) | LG.3A10 | PE | 558754 |
| CD25 (IL-2 Receptor α chain, p55) | PC61 | PerCP-Cy5.5 | 551071 |
| CD11b (Integrin α_m chain) (high) | M1/70 | APC | 553312 |
| CD49b/Pan-NK Cells* | DX5 | FITC | 553857 |
| NK-1.1 (NKR-P1B and NKR-P1C) | PK136 | FITC | 553164 |

Instrument Compatibility

| Flow cytometry systems | | | Cell sorters | |
|------------------------|-----------------|------------|--------------|------------|
| BD FACSCanto™ II | BD LSRFortessa™ | BD™ LSR II | BD FACSAria™ | BD Influx™ |
| ● | ● | ● | ● | ● |

*Use either CD49b or NK1.1 antibody depending on mouse strain.
 CD49b is recommended for BALB/c and NK1.1 is recommended for C57/BL/6.





Mouse Panels

Basic T Cells

8 Color

| Marker | Clone | Fluorochrome | Cat. No. |
|------------------------------------|--------|------------------|---------------|
| CD3e (CD3 ε chain) | 500A2 | Pacific Blue™ | 558214 |
| CD4 (L3T4) | RM4-5 | APC | 553051 |
| CD8a (Ly-2) | 53-6.7 | Alexa Fluor® 700 | 557959 |
| CD25 (IL-2 Receptor α chain, p55) | PC61 | PE-Cy7 | 552880 |
| CD44 (Pgp-1, H-CAM, Ly-24) | IM7 | PerCP-Cy5.5 | 560570 |
| CD62L (L-selectin, LECAM-1, Ly-22) | MEL-14 | APC-Cy7 | 560514 |
| CD69 | H1.2F3 | PE | 553237 |
| CD184 (CXCR4, Fusin) | 2B11 | FITC | 551967 |

Instrument Compatibility¹

| Flow cytometry systems | | | Cell sorters | |
|------------------------|-----------------|------------|--------------|------------|
| BD FACSCanto™ II | BD LSRFortessa™ | BD™ LSR II | BD FACSAria™ | BD Influx™ |
| ● | ● | ● | ● | ● |

¹Instrument must be equipped with a violet laser.

560643

Colors denote newly released products.



Visit bdbiosciences.com/choice for the most up-to-date product listings.

Regulatory T Cells (Tregs)/TH17

6 Color

| Marker | Clone | Fluorochrome | Cat. No. |
|-----------------------------------|------------|-----------------|------------------|
| CD4 (L3T4) | RM4-5 | PerCP-Cy5.5 | 550954 |
| CD25 (IL-2 Receptor α chain, p55) | 7D4 | FITC | 553071 553072 |
| CD223 (LAG3) | C9B7W | PE | 552380 |
| FR4 | 12A5 | APC | 560318 |
| GITR | DTA-1 | PE-Cy7 | 558140 |
| IL-17A | TC11-18H10 | BD Horizon V450 | 560522 |

Instrument Compatibility¹

| Flow cytometry systems | | | Cell sorters | |
|------------------------|-----------------|------------|--------------|------------|
| BD FACSCanto™ II | BD LSRFortessa™ | BD™ LSR II | BD FACSAria™ | BD Influx™ |
| ● | ● | ● | ● | ● |

¹Instrument must be equipped with a violet laser.

560643

Colors denote newly released products.

BD Biosciences
Worldwide
Cell Analysis

2350 Qume Drive
San Jose, CA 95131-1807
USA
Tel.: 408.432.9475
Fax: 408.954.2347
bdbiosciences.com

BD Biosciences
Europe

Erembodegem-Dorp 86
B-9320 Erembodegem
Belgium
Tel.: (32) 2 400 98 95
Fax: (32) 2 401 70 94
help.biosciences@europe.bd.com



XEUR1295-00

APC-Cy7: US patent 5,714,386

For Research Use Only. Not for use in diagnostic or therapeutic procedures.

BD flow cytometers are Class I (1) laser products.

Alexa Fluor® is a registered trademark and Pacific Blue™ is a trademark of Molecular Probes, Inc.

The Alexa Fluor®, Texas Red®, and Pacific Blue™ dye antibody conjugates are sold under license from Molecular Probes, Inc. for research use only, excluding use in combination with microarrays, or as analyte specific reagents. The Alexa Fluor® dyes (except for Alexa Fluor® 430), and Pacific Blue™ dye, are covered by pending and issued patents.

Cy™ is a trademark of Amersham Biosciences Corp.

Cy dyes are subject to proprietary rights of Amersham Biosciences Corp and Carnegie Mellon University and are made and sold under license from Amersham Biosciences Corp only for research and in vitro diagnostic use. Any other use requires a commercial sublicense from Amersham Biosciences Corp, 800 Centennial Avenue, Piscataway, NJ 08855-1327, USA.

Purchase does not include or carry any right to resell or transfer this product either as a stand-alone product or as a component of another product. Any use of this product other than the permitted use without the express written authorization of Becton, Dickinson and Company is strictly prohibited. Product availability and prices are subject to change without notice.

© 2009 Becton, Dickinson and Company. All rights reserved. No part of this publication may be reproduced, transmitted, transcribed, stored in retrieval systems, or translated into any language or computer language, in any form or by any means: electronic, mechanical, magnetic, optical, chemical, manual, or otherwise, without prior written permission from BD Biosciences.

BD, BD Logo and all other trademarks are property of Becton, Dickinson and Company. © 2009 BD

